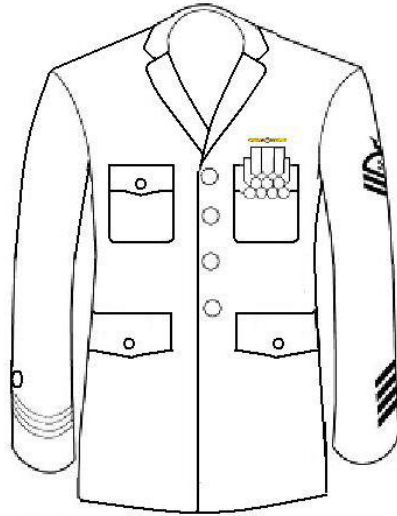
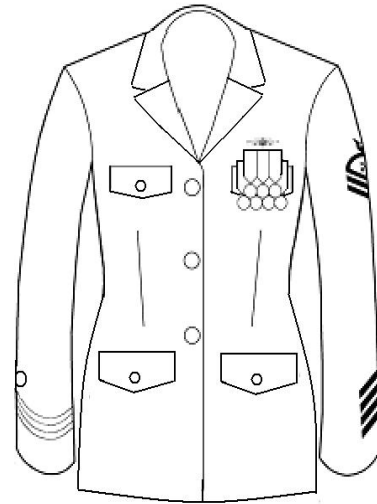


3.B.4. Dinner Dress Blue



Men



Women

Authorized Uniform Items	Additional Comments
SDB Coat	
Long Trousers	Blue Dress Trousers
Skirt	Optional for women.
White Shirt	Long or short sleeve.
Shoulder boards/Collar Insignia	None.
Tie	Men: black bow tie. Women: black tab tie.
Small Medals	Worn over left pocket.
Miniature Qualification Insignia	See section 3.E.4 for proper wear instructions.
Miniature Devices	See section 3.E.4 for proper wear instructions.
Small Identification Badges	See section 3.E.4 for proper wear instructions.
White Gloves	Not required for E-9 and below. At prescribing officer's discretion for CWO2 and above.
Black Socks or Hosiery	Socks are worn with oxfords for men or women. Hosiery may be worn with oxfords, pumps, or flats for women.
Black Oxford Shoes	Optional Synthetic high gloss.
Black Oxford Shoes, Pumps, or Flats	Oxfords, pumps, or flats are worn with either trousers or skirts for women. Optional Synthetic high gloss.
Belt with Buckle	Standard 1 ¼ inch black web belt with brass buckle. 1 ¼ inch nylon belt is optional.
Head Gear	Combination cap.
Occasions for Wear	Official functions where civilians wear black tie such as dinners, dances, receptions, weddings, ceremonies, etc. (Not as formal as Formal Evening Dress or Dinner Dress Jackets.)
Cold weather	All personnel