

STATE OF THE WATERWAY – 2011



U. S. Port Rankings 2008



(Millions of Short Tons and % of change from 2007 – 2008 ACOE data)

1	Port of S Louisiana, LA	224.0	-	2.2%	16	Norfolk, VA	44.6	+12.2%
2	Houston, TX	212.2	-	1.8%	17	Baltimore, MD	43.4	+ 5.2%
3	New York, NY and NJ	153.5	-	2.4%	18	Pittsburgh, PA	41.8	+ 9.8%
4	Long Beach, CA	80.2	-	6.7%	19	Tampa, FL	39.7	- 15.3%
5	Corpus Christi, TX	76.8	-	5.3%	20	Paulsboro, NJ	36.4	- 4.3%
6	New Orleans, LA	73.0	-	4.0%	21	Valdez, AK	36.0	- 4.8%
7	Beaumont, TX	69.5	-	14.6%	22	Savannah, GA	35.4	- 3.0%
8	Huntington-Tristate	69.3	-	9.4%	23	Pascagoula, MS	33.6	- 4.6%
9	Mobile, AL	67.6	+	4.9%	24	Philadelphia, PA	32.3	- 8.2%
10	Plaquemines, LA	63.7	+	8.4%	25	Port Arthur, TX	31.8	+ 8.5%
11	Los Angeles, CA	59.8	-	8.7%	-----			
12	Lake Charles, LA	53.8	-	16.3%	26	Freeport, TX	29.8	+ 0.8%
13	Texas City, TX	52.6	-	7.4%	54	Galveston, TX	9.8	- 0.1%
14	Baton Rouge, LA	51.8	-	5.2%				
15	Duluth-Superior	45.3	-	2.5%				

U. S. Port Rankings 2009



(Millions of Short Tons and % of change from 2007 – 2008 ACOE data)

1	Port of S Louisiana, LA	212.6	-	5.1%	16	Pascagoula, MS	36.6	+	9.0%
2	Houston, TX	211.3	-	0.4%	17	Tampa, FL	34.9	-	12.1%
3	New York, NY and NJ	144.7	-	5.7%	18	Valdez, AK	34.5	-	4.2%
4	Long Beach, CA	72.5	-	9.6%	19	Port Arthur, TX	33.8	+	6.5%
5	Corpus Christi, TX	68.2	-	11.1%	20	Pittsburg, PA	32.9	-	21.4%
6	New Orleans, LA	68.1	-	6.7%	21	Savannah, GA	32.3	-	8.6%
7	Beaumont, TX	67.7	-	2.5%	22	Philadelphia, PA	31.8	-	1.6%
8	Huntington-Tristate	59.2	-	14.7%	23	ST Louis, MO	31.3	+	6.2%
9	Los Angeles, CA	58.4	-	2.3%	24	Paulsboro, NJ	30.3	-	16.8%
10	Texas City, TC	52.6	+	0.1%	25	Duluth, MN	30.2	-	33.3%
11	Lake Charles, LA	52.3	-	2.8%	-----				
12	Mobile, AL	52.2	-	22.8%	27	Freeport, TX	27.4	-	8.3%
13	Baton Rouge, LA	51.9	+	0.2%	47	Galveston, TX	9.8	+	0.1%
14	Plaquemines, LA	50.9	-	20.2%					
15	Norfolk, VA	40.3	-	9.6%					

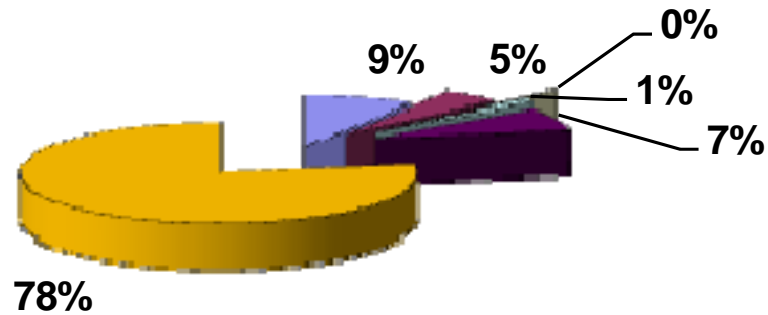


VTS MOVEMENTS – 2010

Tug/Tow	126,751	+	6.49%
Ships	22,093	+	8.02%
Other	12,367	+	26.84%
Public	1,614	-	29.12%
<hr/>			
Total Users	163,133	+	7.47%
<u>Ferries</u>	<u>108,307</u>		
Total w/Ferries	271,440		



TRANSIT SUMMARY – 2010



- TANKER
- FREIGHTER
- CRUISE
- PUBLIC
- OTHER
- TOW

2010 TYPICAL DAY IN THE VTSA



AVG

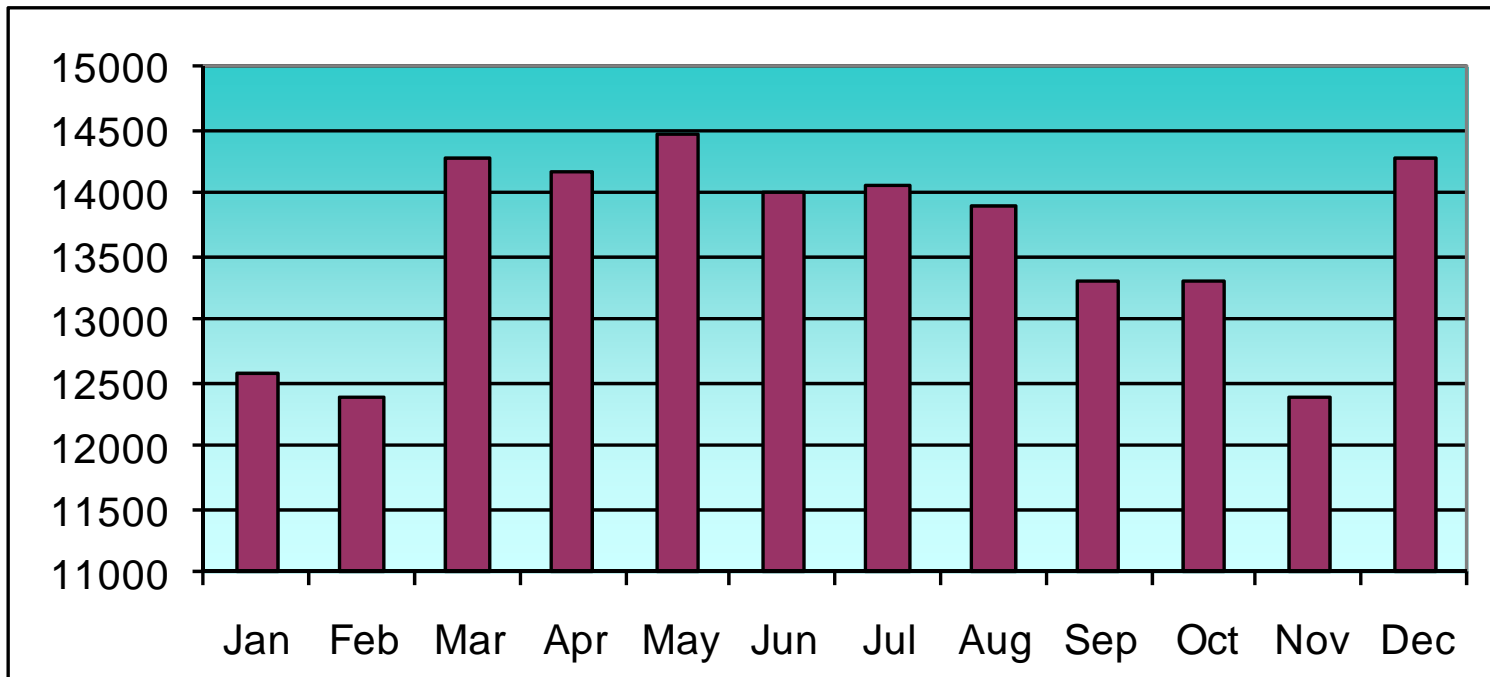
HIGH

40	TANKER TRANSITS	60
21	FREIGHTER TRANSITS	42
1	CRUISE SHIPS	4
347	TOW TRANSITS	462
5	PUBLIC VESSEL TRANSITS	28
297	FERRY TRANSITS	315
34	OSV / OTHER TRANSITS	69

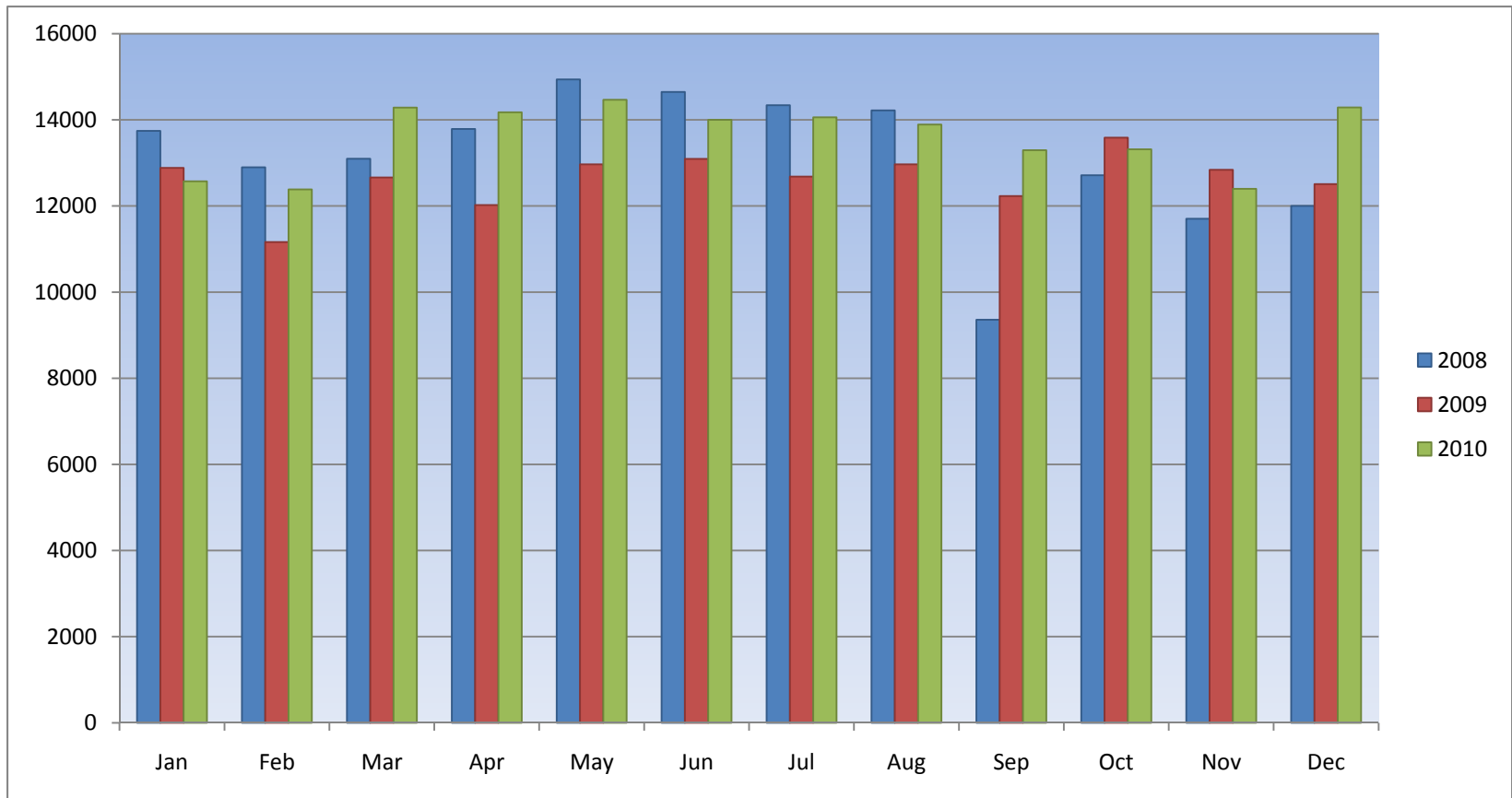
- 68 ships in port



2010 Monthly Transits



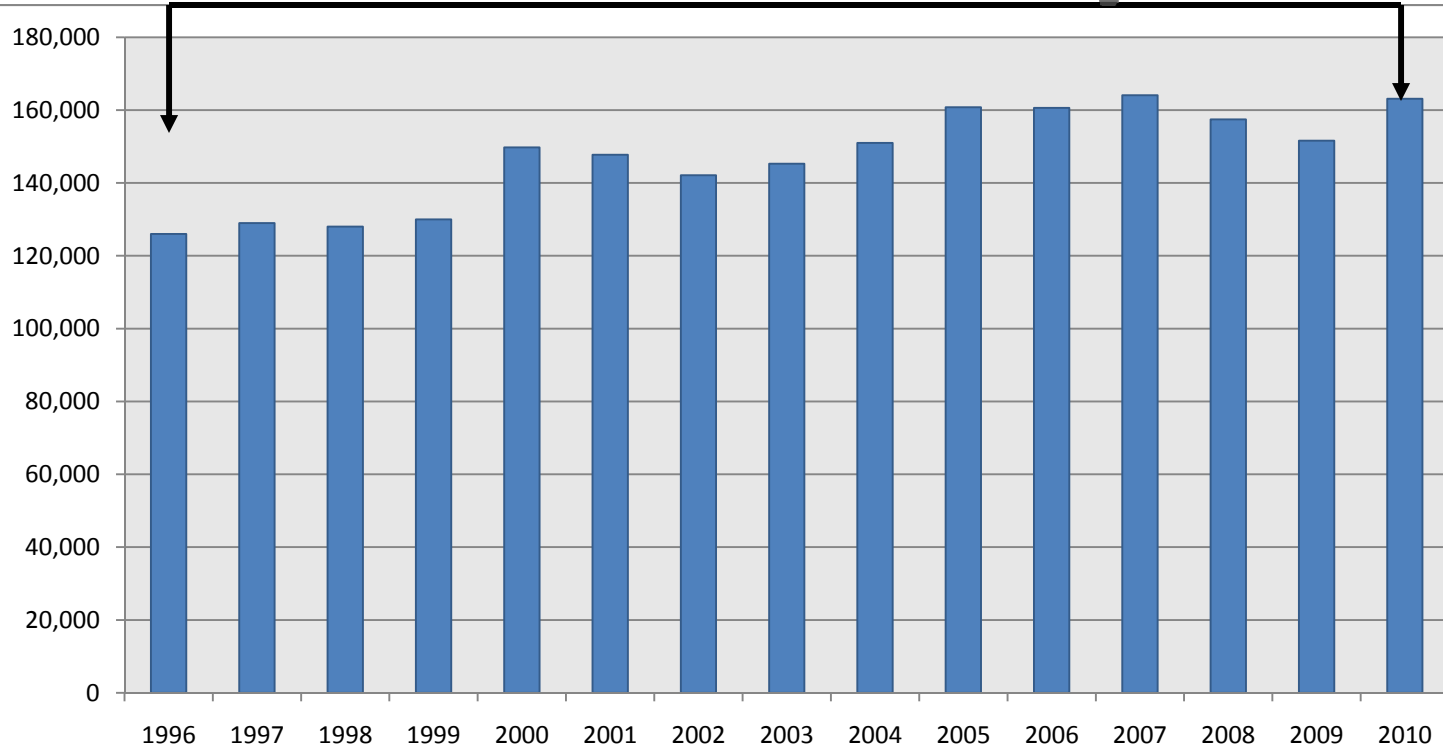
08/09/10 Month Comparison



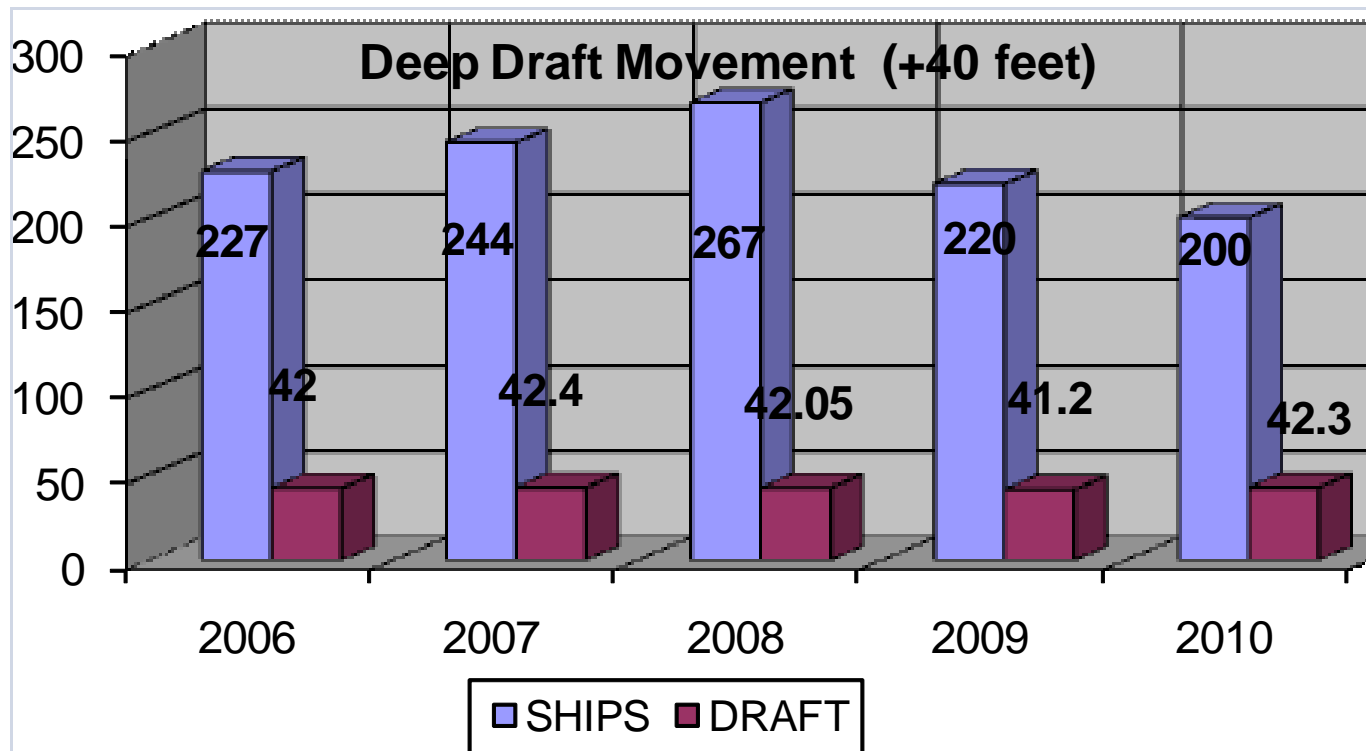
1996 – 2010 TRANSITS



26.5% over 15yrs



DEEP DRAFT MOVEMENT



INCIDENT SUMMARY – 2010

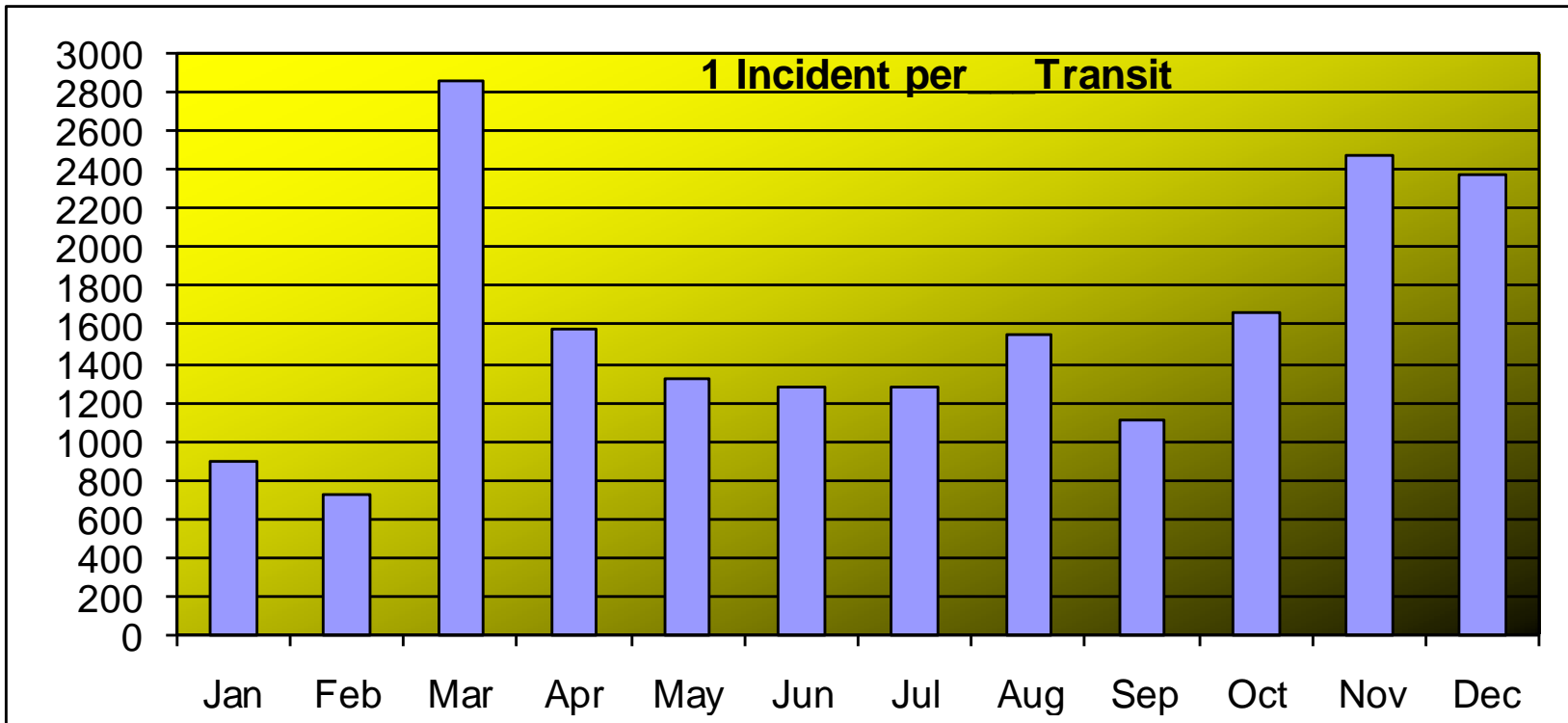


118 INCIDENTS (134 for 09) DOWN 12%

- 63 VESSEL CASUALTIES -4.5%
- 32 GROUNDINGS -11%
- 9 MISCELLANEOUS -40%
 - Fire, Barges Adrift, Pollution Incidents, High-Lines, Sinking
- 4 COLLISIONS -43%
- 10 ALLISIONS -0%



Transit to Incident Ratio

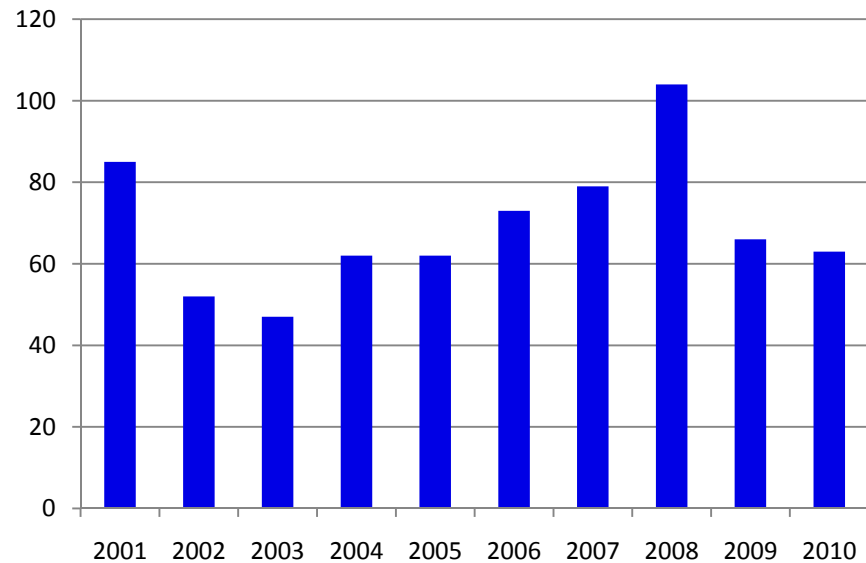




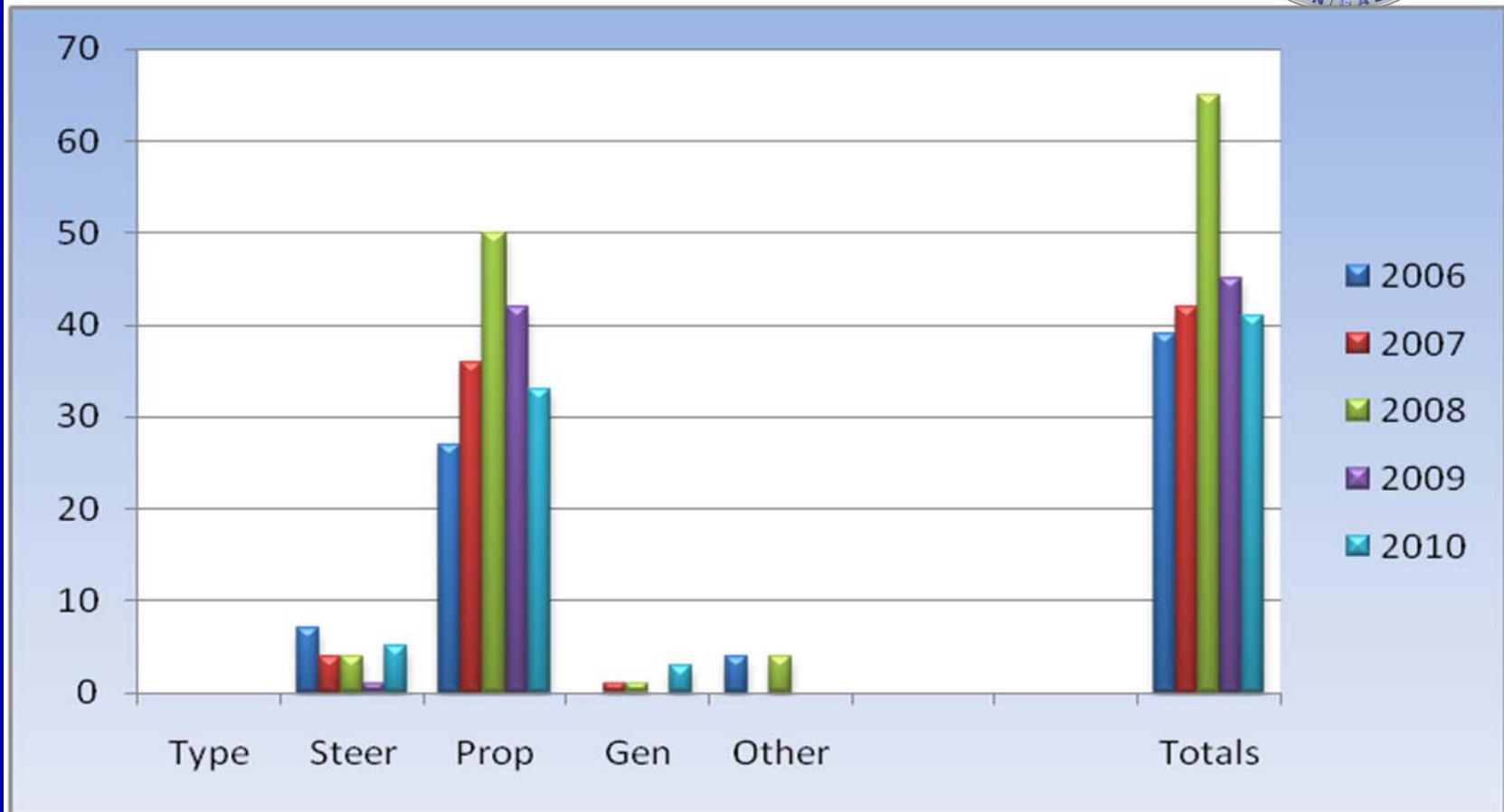
2010 VESSEL CASUALTIES

- 63 TOTAL VSL CASUALTIES
 - 41 SHIP
 - 20 TOW
 - Other
- 10- 1 Casualty/ 2589 Transits
- 09- 1 Casualty/ 2297 Transits
- 08- 1 Casualty/ 1514 Transits
- 07- 1 Casualty/ 2077 Transits

Casualties



Ship Casualties



2010 SHIP CASUALTIES

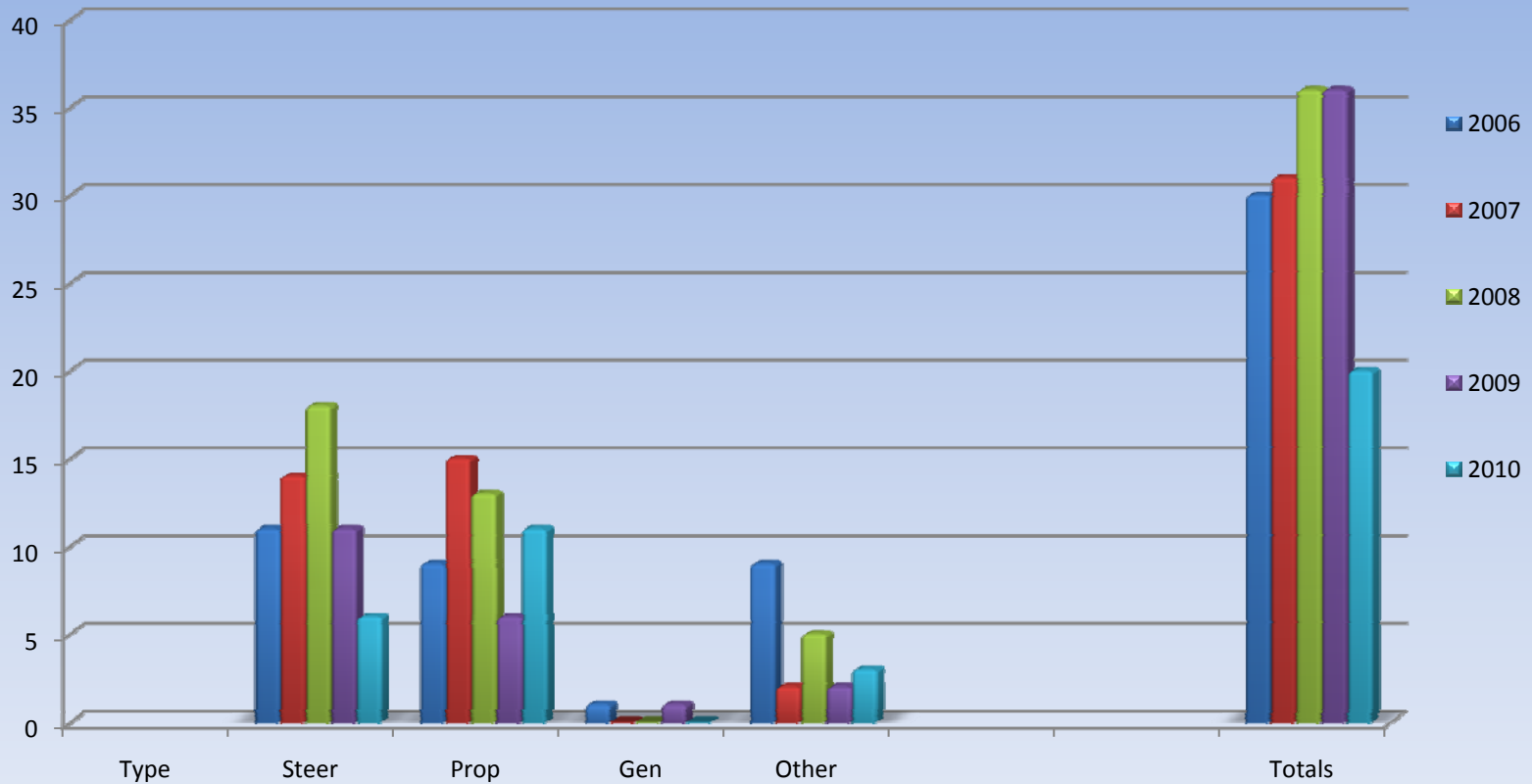


➤ 41 TOTAL SHIP CASUALTIES

- 80% Propulsion Failures
- 12% Steering
- 8% Other

- 1 Ship Casualty per 546 Transits in 10
- 1 Ship Casualty per 461 Transits in 09
- 1 Ship Casualty per 344 Transits in 08
- 1 Ship Casualty per 525 Transits in 07
- 1 Ship Casualty per 552 Transits in 06

Tow Casualties





2010 TOW CASUALTIES

➤ 20 TOTAL TOW CASUALTIES

- 55 % Propulsion Related
- 30 % Steering Related
- 15 % Other

- 1 Tow Casualty per 6,337 Transits in 10
- 1 Tow Casualty per 5,951 Transits in 09
- 1 Tow Casualty per 3,368 Transits in 08
- 1 Tow Casualty per 3,986 Transits in 07
- 1 Tow Casualty per 3,988 Transits in 06

Zoom Area, Zoom In, Zoom Out, Zoom Prev, Vector, History, Label, Set Trk, Acq Trk, Set Trk, Man Trk

NEW PIP, OPEN PIP, Trk Lst, Rng Brg, Config, ROI Ref

New AIS Text Message

Operational Alarms

Suppress Ack

Cursor Position

Lat/Long

Lat 29:40.95 N

Long 094:58.10 W

Selected Track

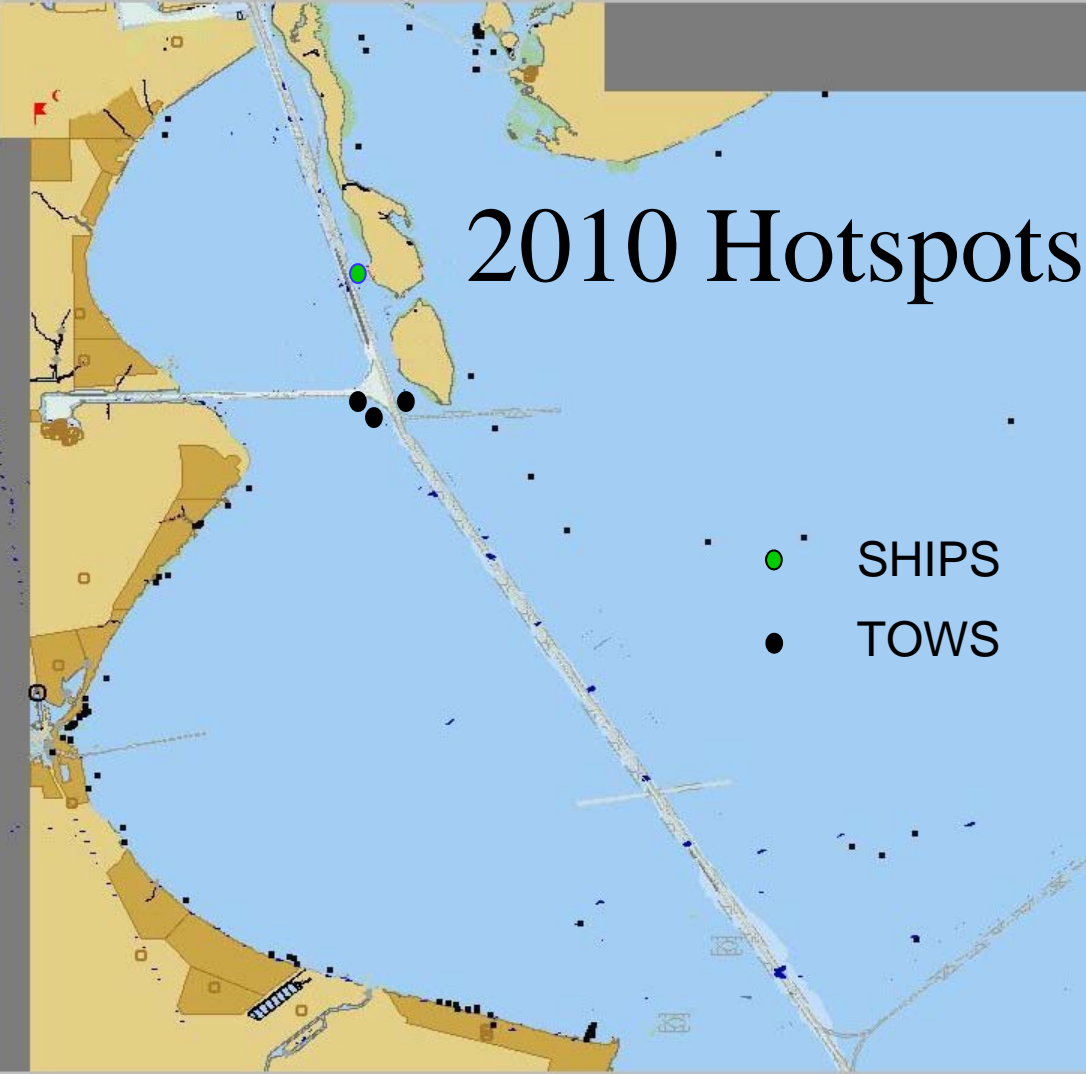
Track Vector (min)

Range Scale (nm)

Track History (min)

Operational Alarms display area with scroll bars.

- 20.0 nm
- Oiltanking
 - Barb Cut
 - Cross x 4



- SHIPS
- TOWS

Zoom In Zoom Out Prev Vector History Label AcqTrk ManTrk

NEW PIP OPEN PIP TrkLst RngBrg Config ROI Adv

New AIS Text Message

Selected Track Track Vector (min)

Range Scale (nm) Track History (min)

Operational Alarms

Cursor Position

Lat/Long

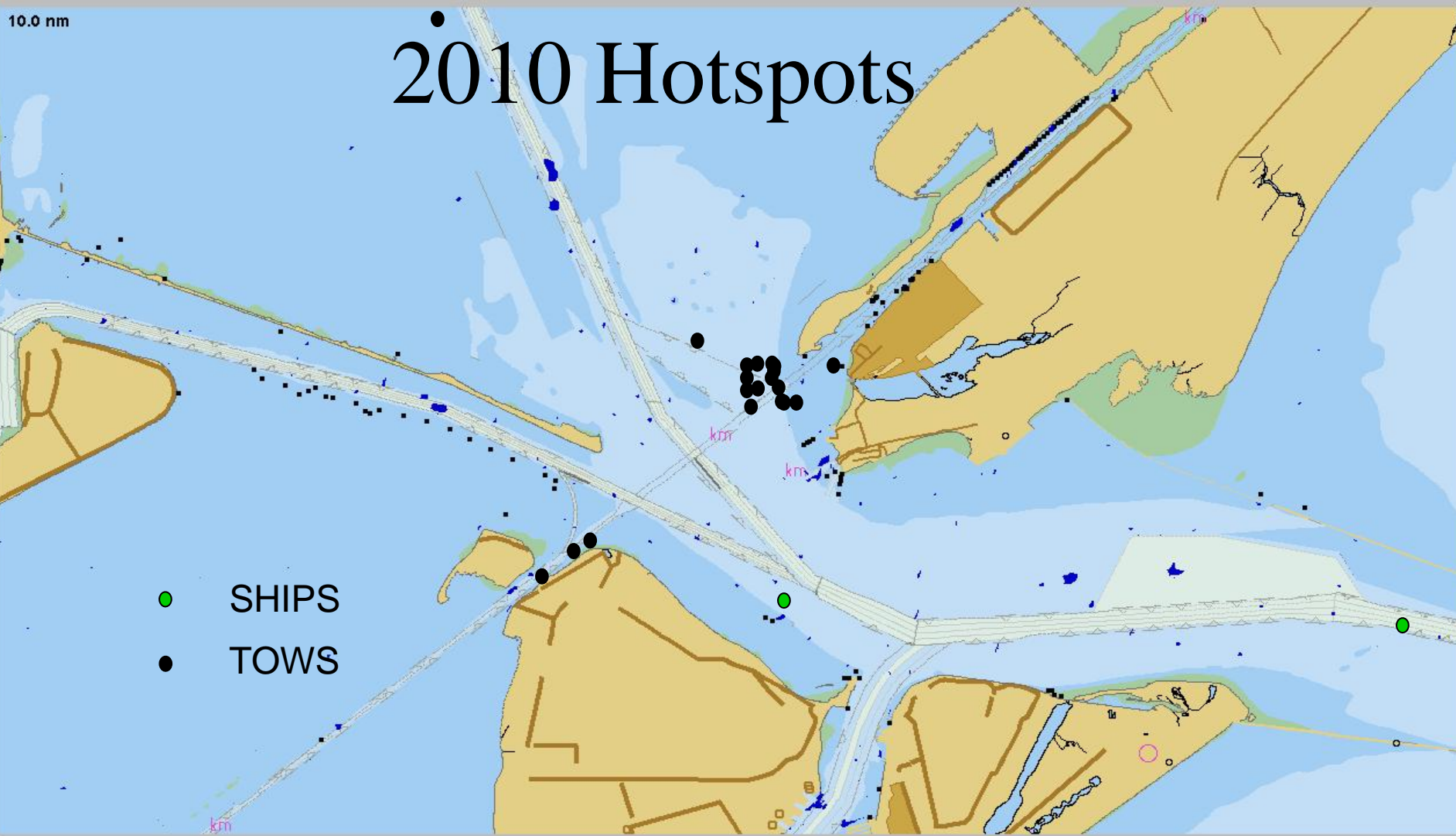
Lat

Long

10.0 nm

2010 Hotspots

- SHIPS
- TOWS



Zoom In Zoom Out Prev Vector History Label AcqTrk ManTrk

NEW OPEN TrkLst RngBrg Config ROI Adv

New AIS Text Message

Operational Alarms

Suppress Ack

Cursor Position

Lat/Long

Lat 29:40.95 N

Long 094:58.10 W

Selected Track

Range Scale (nm) 20.0

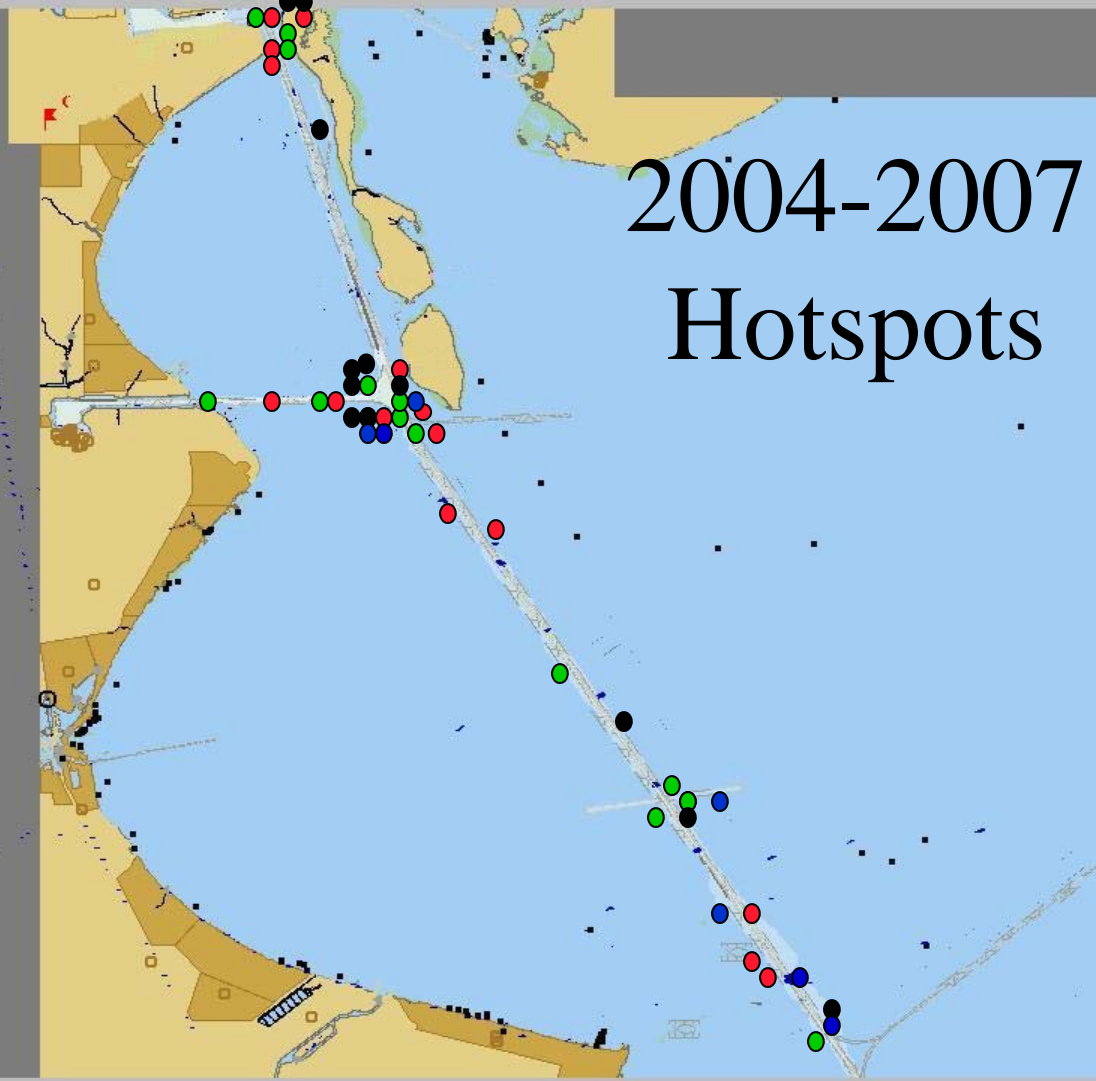
Track Vector (min) 2

Track History (min) 5

Operational Alarms display area with scroll bar

20.0 nm

- 2004
- 2005
- 2006
- 2007



2004-2007
Hotspots

GROUNDINGS 2010



➤ REPORTED CAUSAL FACTORS

- CURRENT
- WIND
- TRAFFIC CONGESTION
- LACK OF REALTIME INFORMATION
- AIDS TO NAVIGATION
- OPERATOR ERROR

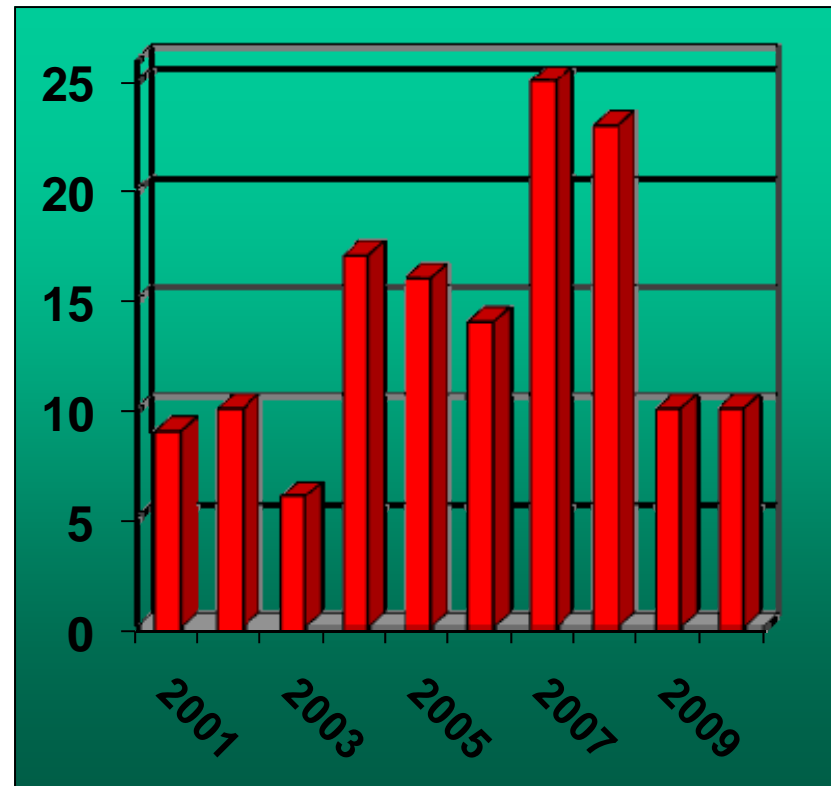
2010 ALLISIONS



➤ 10 ALLISIONS Same as 09

➤ 6 INVOLVING TOWS

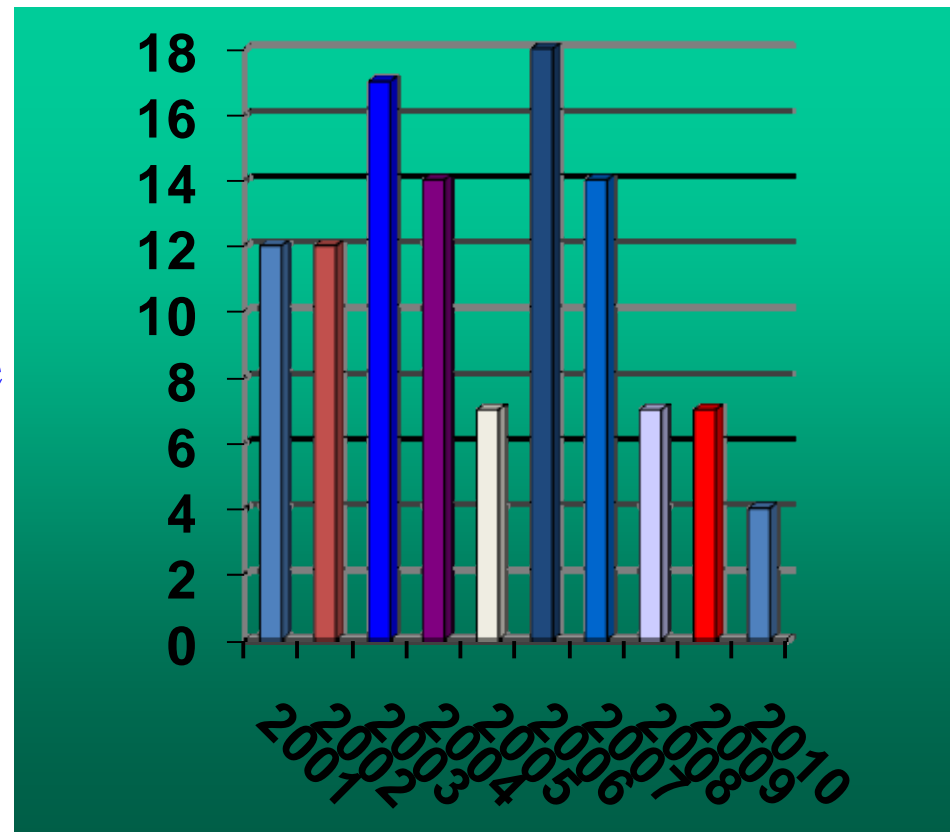
➤ 4 INVOLVING SHIPS



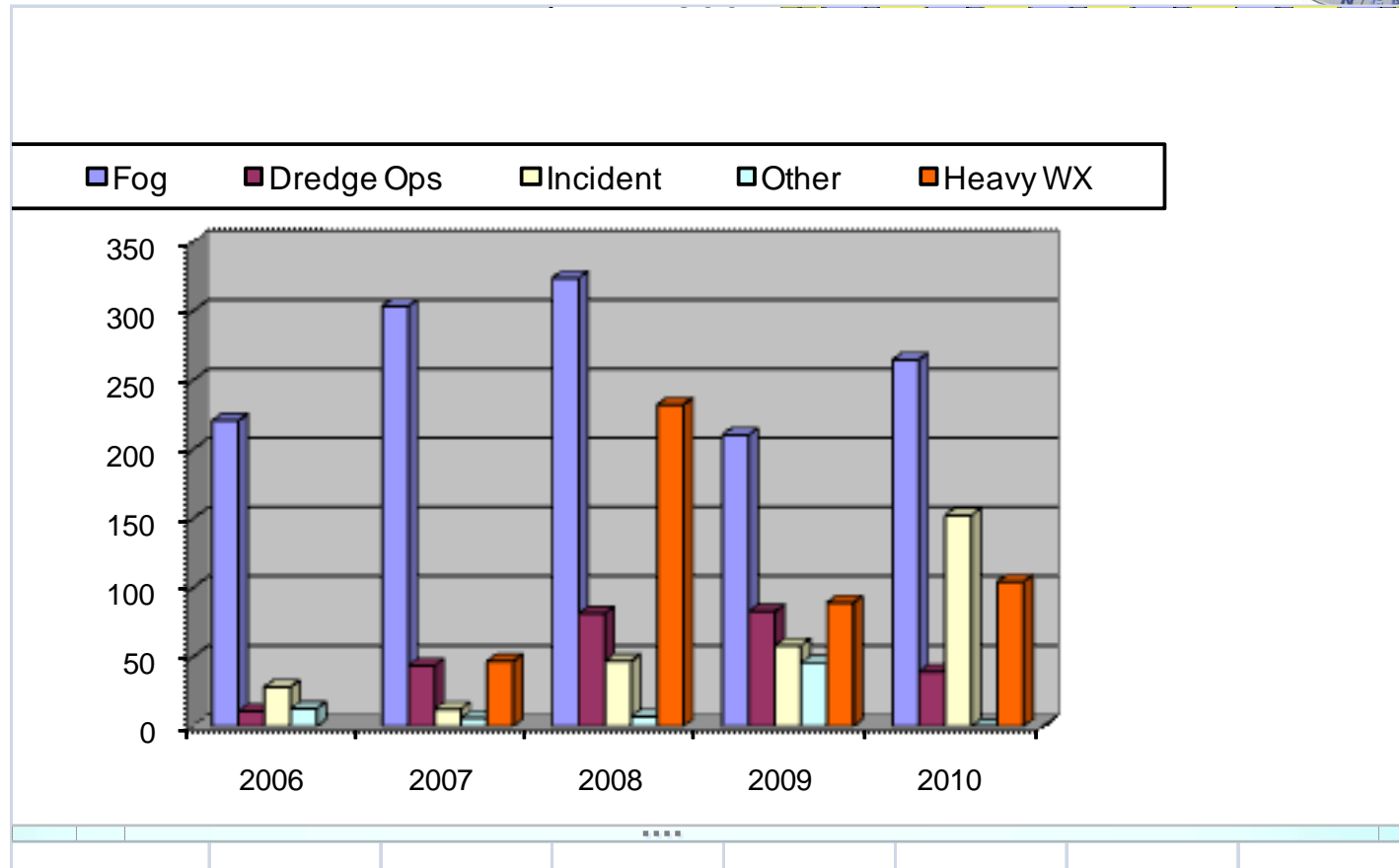
2010 Collisions -43%



- 4 Collisions
- Continue to see a significant decrease



HISTORICAL CHANNEL CLOSURES



Reports of Unsafe Moorings (Slack Lines)



- Decrease of 2.6%
- Avg speed of vessel reported causing damage or parted lines ≤ 6.2 kts



MAJOR EVENTS 2010



- JR Nicholls sinking
- Downed Power lines at Baytown
- Significant channel maintenance and facility dredging (9 dredges in the area for several months)
- CG Members deployed to assist in Deepwater Horizon
- Several close calls from clogged sea strainers due to fish!!!



ATON KNOCKDOWNS - 2010

- 46 SELF-REPORTED KNOCKDOWNS (25.3% OF TOTAL CY '10 KNOCKDOWNS)

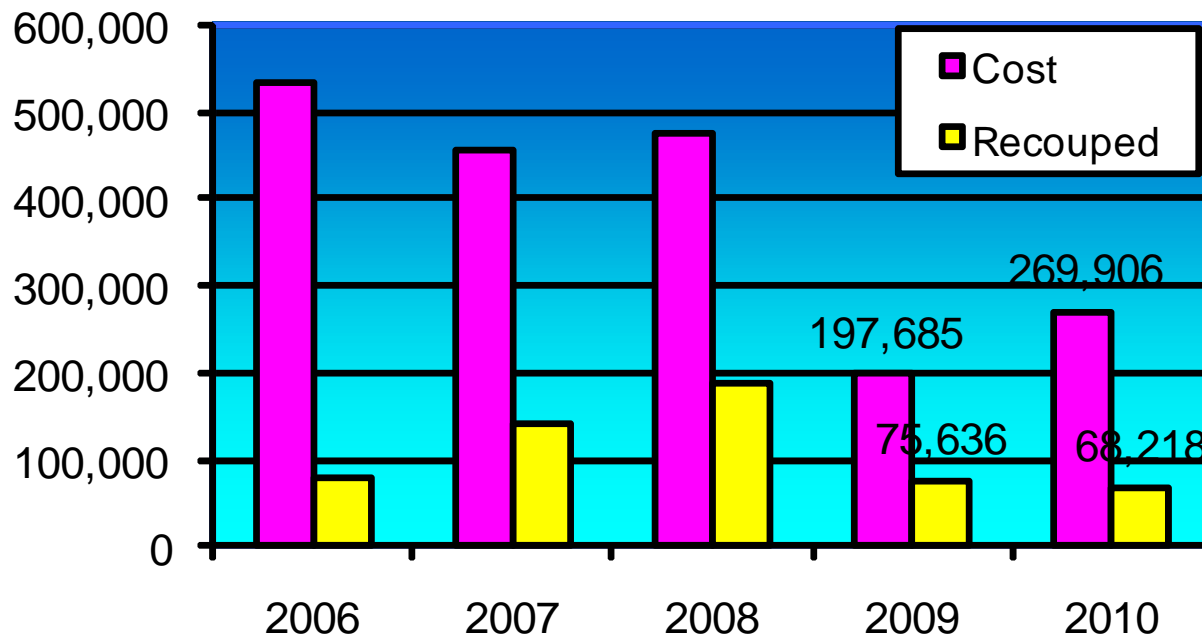
- LEADING CAUSES (dual causes)
 - WIND AND CURRENT (68%)
 - TRAFFIC DENSITY (23%) (dredging)
 - OPERATOR ERROR (18%)



Cost/Recovered



Knock Down Recovery



CURRENT INITIATIVES



➤ **HOGANSAC and Industry Partnerships:**

- **HOGANSAC/SETWAC Hosting NHS Conference**
- **Brownwater University**
- **Waterways Optimization**
- **Aids to Navigation Knockdown Reporting**
- **Dredging subcommittee**
- **Facility Visit Team**
- **Pilot Dispatch Outreach**

➤ **CG proposed move to Ellington**

➤ **VTSA Redesign (ref: PAWSA)**



VTS Redesign

- Extend AOR Entrance to GB Buoy
- Extend East to MM 343 (3 miles)
- Extend West to MM 365 (13 Miles)
- Old River and San Jacinto (no fleets)
- Increase Visual Sensors (River/ICW)
- Reduce/Alter current check Points
- Add a Frequency and Sector
- Increase Personnel



VTS/Waterways Contacts

- **CDR Mike Zidik, Waterways Management**
 - (713) 671-5164 Michael.S.Zidik@uscg.mil
- **Steve Nerheim, Director VTS Houston/Galveston**
 - (713) 678-9090 Steven.W.Nerheim@uscg.mil
- **Warner Welch, Deputy Director VTS Houston/Galveston**
 - (713) 671-5136 Richard.W.Welch@uscg.mil
- **LT Rachel Martin, Operations Officer**
 - (713) 671-5155 Rachel.A.Martin@uscg.mil
- **Margaret Brown, Waterways Management**
 - (713) 678-9001 Margaret.A.Brown@uscg.mil
- **Vessel Traffic Center, Watch Supervisor 24hrs**
 - (713) 671-5103 vtshouws@uscg.mil
- **Targeting and Offshore Approaches**
 - (713) 678-9009
- **VTS Webpage – www.uscg.mil/d8/vts/houston-galveston**